

ALICLAD LITE

MADE IN
BRITAIN

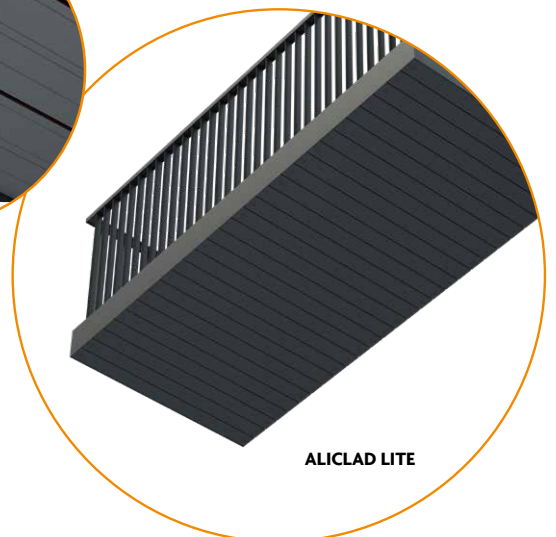
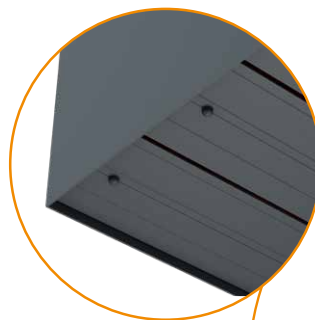
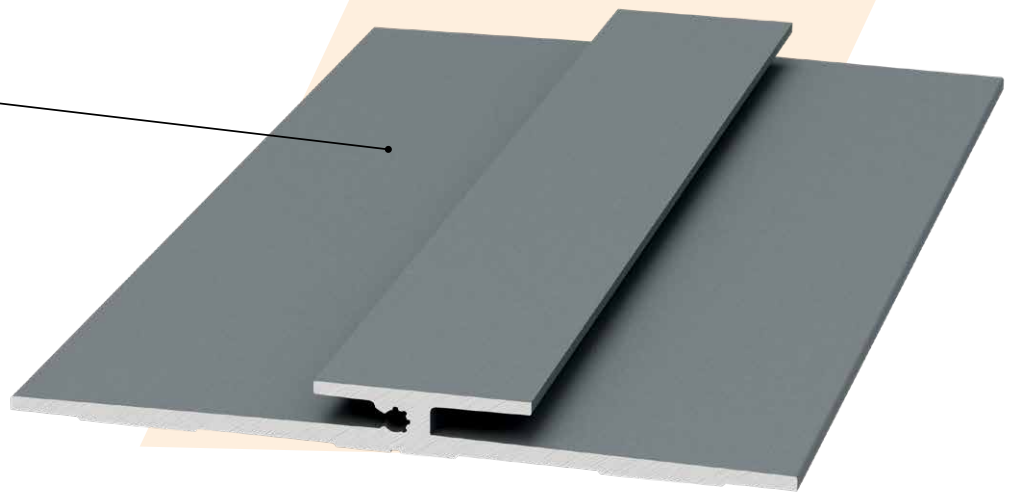
Specification Datasheet

The AliClad Lite is a lightweight, non-combustible aluminium cladding soffit perfect for balconies or soffits, offering exceptional fire resistance and a quick-fit design for diverse architectural requirements, in line with BS 8579:2020 and NHBC Standards 2024.



A2-s1, d0
FIRE
RATED

INTERLOCKING
EDGE



ALICLAD LITE

Benefits include:

- Fire Resistant to A2-s1, d0
- Maximum Span: 1000mm between fixings
- Standard Stock Lengths 6m
- 30 Year Warranty
- Life Expectancy 60 years
- Material 6063 T6 Structural Grade Aluminium
- Available in any RAL Colour

All AliClad Soffit and Cladding Systems have been independently tested for fire performance to BS EN 13823, BS EN 13501, and BS EN ISO 1716; for loading performance to BS 6180; for deflection performance to BS 8118, BS 6399, and BS 1991; for wind performance to BS 1991.

 **ALICLAD**
Soffit & Cladding Systems

Product Specification

- Fire resistant: A2-s1, d0 when coated
- The weight of the AliClad Lite Soffit and Cladding System is 1.02 kg per linear M.
- Coating thickness - 60-80 microns
- Impact test - with an energy of 2.5kJ to ensure that the coating adheres to the substrate to EN ISO 6272 / ASTM D2794
- Bend test - on 5mm mandrel to ensure adhesion after bending to EN ISO 1519
- Machu Test (accelerated corrosion test) - in a solution made up of sodium chloride acetic acid and hydrogen peroxide at 37 degrees °C Duration 48 hours
- Qualicoat 2.4.1. - cross hatch cuts are made at 2mm spacings with one being at 90 degrees to the other cut, tape is the applied left for 2 minutes and removed to check for adhesion of paint (EN ISO 2409 2013)
- Qualicoat 2.18 - sawing and drilling test to ensure no flaking after cutting (using sharp tools)
- Acid salt spray test - ISO 9227
- EN ISO 3231 - Resistance to humid atmospheres containing Sulphur Dioxide
- EN ISO 11341 - Accelerated weathering test
- EN ISO 20810 - Natural weathering test (Florida Test) (Carried out on Powder Type)
- EN ISO 12206-1 - Resistance to mortar (Carried out on powder type)
- EN ISO 6270 - 2 - Constant climate condensation water test.
- Choice of colours - Available in a wide range of RAL colours.

Protective Finish

The Soffit and Cladding System is coloured using the Qualicoat powder coating finish. Qualicoat is a quality label organisation committed to maintaining and promoting the quality of coating on aluminium and its alloys for architectural applications.

Installation

The AliClad system is designed for fast and hassle-free installation. Full installation guides are available on www.alideck.co.uk.

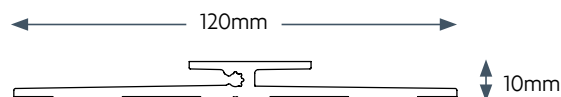
Dimensions

INDIVIDUAL BOARDS:

Length: 6 metres

Width: 120mm

Depth: 10mm



The boards can be cut to size along both the length and width

Maximum Overall Area: Unlimited
Allowable Span: 1000mm between fixings

Construction

AliClad is constructed completely from 100% aluminium (6063 T6 grade), up to 67% of which has been recycled to make these boards eco-friendly and much better for the environment.

Maintenance

AliDeck's aluminium decking, finished with a 7-stage Qualicoat system, requires minimal maintenance. A quick wipe with a damp lint-free cloth is enough. Our superior class 2 powder coating exceeds industry standards, ensuring lasting quality with less upkeep.

Colour Options

AliClad Lite System is available in **any RAL colour**. Please refer to our Standard Colour Range datasheet for colour options (available at www.alideck.co.uk/decking/boards/alideck-colours/).

Non-standard colours are available on request as special orders, but may affect cost and lead-time. AliClad Lite can be supplied non-coated/mill finish to achieve A1 fire rating.



Warranty

The Soffit and Cladding System is supplied with a **30 year warranty** against splitting, cracking, warping, splintering, rotting, twisting and material or manufacturing defects. It has a minimum **60 year life** expectancy.



**A2-s1, d0
FIRE RATED**



**ALL
ALUMINIUM**



**HEAT
RESISTANT**



**DURABLE
TEXTURED FINISH**



**LOW
MAINTENANCE**



RECYCLABLE



**STABLE IN ALL
WEATHER
CONDITIONS**

Europa & Jenner House
Victory Park
1-2 Trident Close
Medway City Estate
Rochester ME2 4ER

Tel: 01622 235 672
Email: info@alideck.co.uk
www.alideck.co.uk

ALICLAD
Soffit & Cladding Systems