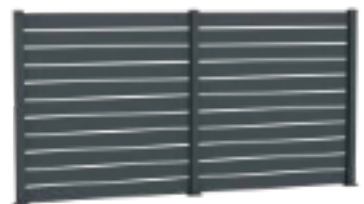


A-Fence

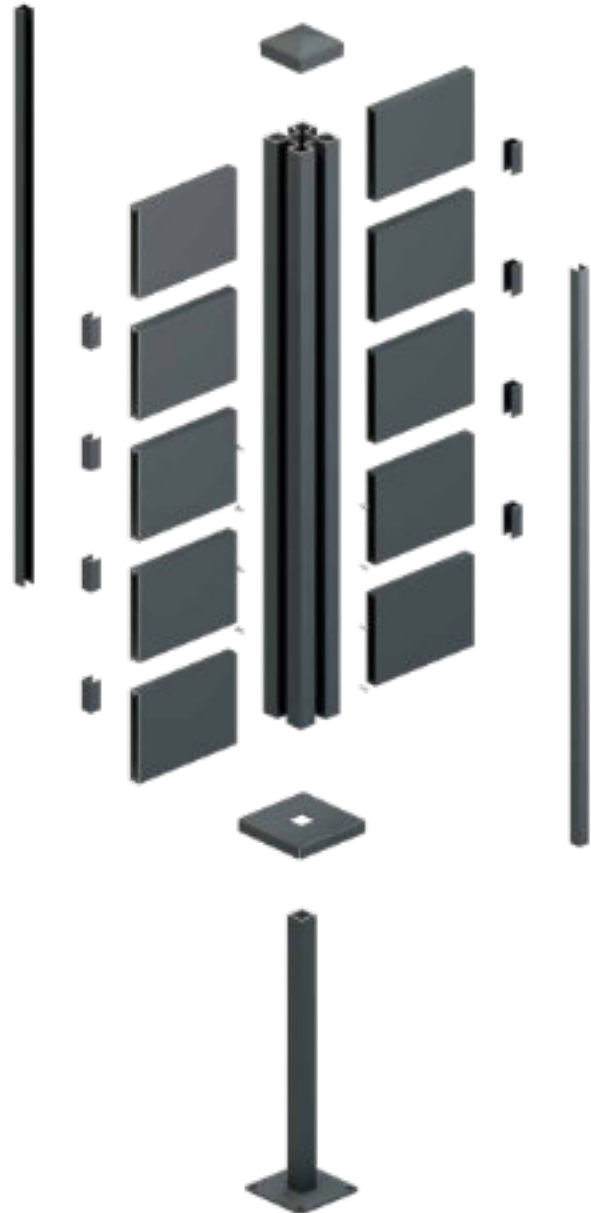
INSTALLATION GUIDE

Architectural Aluminium
Fencing Solutions



CONTENTS

Profiles List	2
Tools Required	4
Post Installation	5-7
50/100/150mm Slats Installation	8-10
120mm Interlocking Slat Installation	11-12
Gate Installation	13-18



A-FENCE

PROFILES



Aluminium Post



Aluminium Slat
50mm, 100mm, 150mm



Aluminium Slat
120mm Interlocking



Steel in-ground or on-ground
base plate



Aluminium Base Plate Covers



Aluminium Slat Spacer /
Cover trim



Inground post



Post caps



Stainless steel corner brackets
with self drillers



Gate Post



Gate Post Plate



Gate T Section Stopper

A-FENCE

PROFILES



No. 2 Phillips screw



Post fixing screws



4.2mm x 16mm Self-Drilling screws



Sikaflex

A-FENCE

TOOLS REQUIRED



Drill



4mm Drill Bit



Spirit Level



Plastic sheeting



Impact Driver



Masonry Drill Bits to suit your Fixings (not supplied)



Rubber Mallet



Mastic Gun



8mm Nut driver



No. 2 pozidrive screwdriver bit



10mm Masonry Drill Bit



Digging Equipment



Chop saw
with aluminium blade,
recommended 60 to 80 tooth



Masonry Drill



String Line to align Post
bases & Tops



Tape Measure

A-FENCE

INSTALLATION INSTRUCTIONS

Post Installation

STEP 1: Install concrete foundations

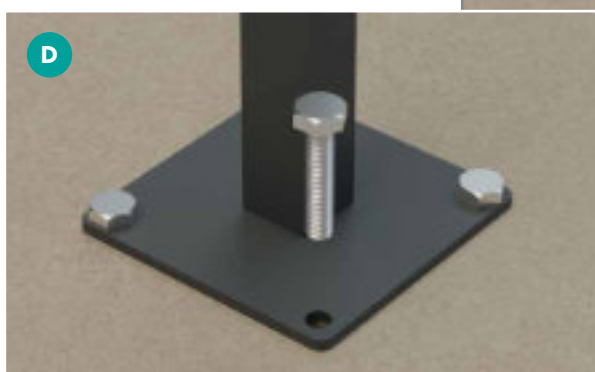
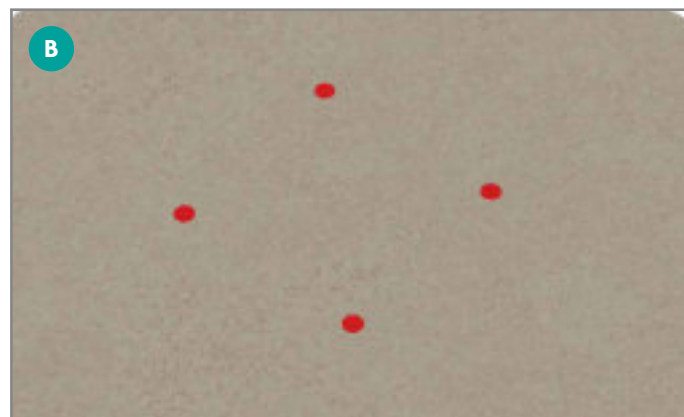
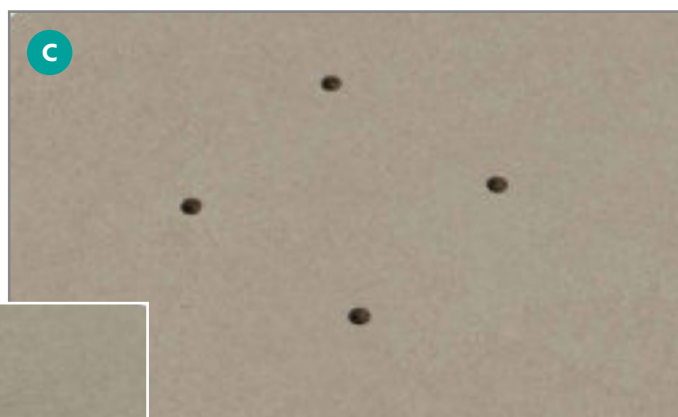
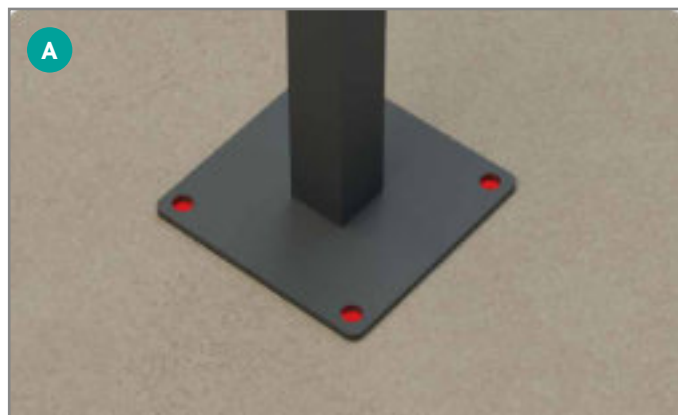
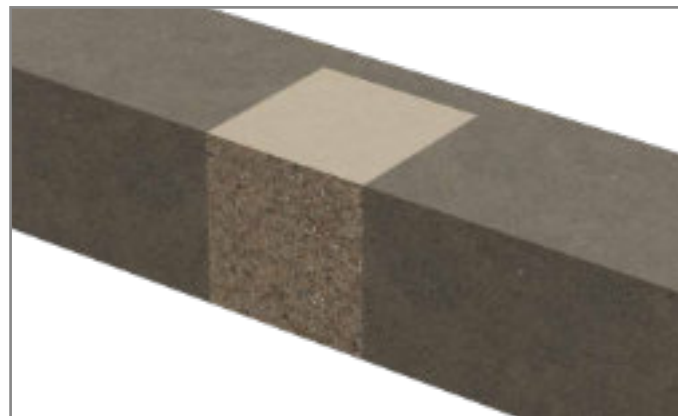
You have 2 options; either in-ground or on-ground installation. If on-ground option is chosen ensure the top of the foundations are level to each other, if this is not possible because you are on a hill please consider the difference in height between the two foundations and allow for this on your post length.

Top fix on-ground option

Depending on location we would recommend a concrete foundation of approximately 400mm x 400mm x 400mm, for exposed areas we would recommend 600mm x 600mm x 600mm for each post.

Once the concrete foundation has been installed and is level and has cured, the base plate can now be bolted to the foundation using fixings suitable for your environment (not supplied).

Using the base plate as a template mark out your 4 hole positions ensuring that the centre to centre dimension is correct. Drill the 4 fixing holes for each base plate with a drill bit suitable for your chosen fixings (not supplied).



Post Installation

STEP 2: Install concrete foundations

In-Ground option

Excavate a hole of approximately 500mm deep x 300mm wide x 300mm wide and install your in-ground post into the center of the hole, and ensure that your post is to be set level using your spirit level. Then back fill around the post with a suitable concrete mix, we recommend a C4 foundation grade of concrete.

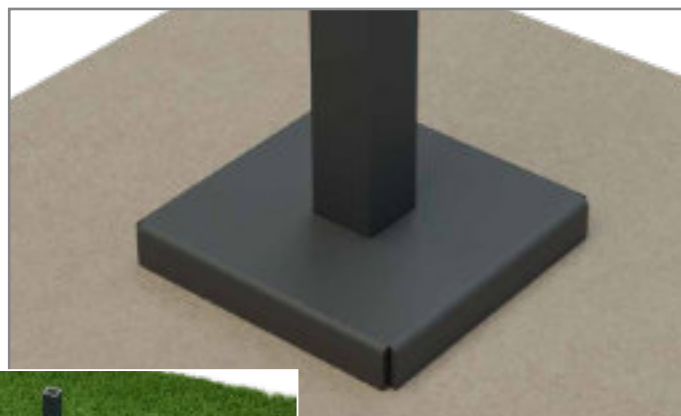
If installing on a turfed area back fill as above but only backfill to 450mm. You will now have a space of approximately 50mm from under the baseplate to the top of the concrete. Now backfill the remaining 50mm with soil and re turf.

Once concrete has cured you can then move onto the next stage.



STEP 3: Install the base plate covers, even if you have chosen the in-ground option

Simply install the base plate covers on top of the baseplate to cover over the heads of the floor fixings by sliding it over the inner post, even if you have chosen the in-ground options please install the base plate covers.



Post Installation

STEP 4: Install the posts

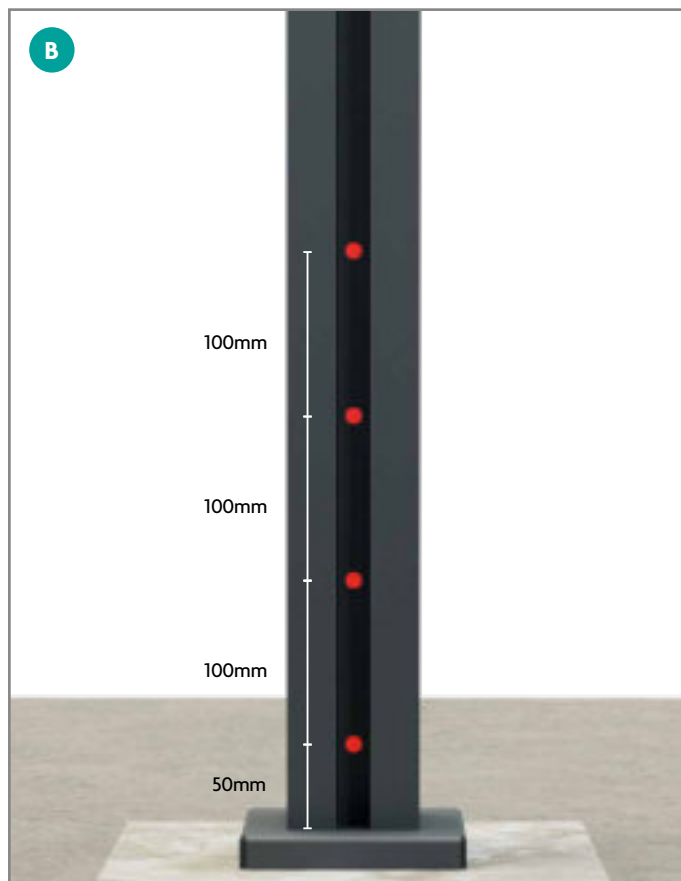
If you are installing a Gate also, ensure that the Posts are orientated so that the hinges of that Gate are always installed to the flat face of the Post.

Otherwise orient the Posts so that the flat face is pointing outwards.

Slide the aluminium post over the top of the base plate and ensure the post is plumb, consider packing up the base plate if it is not plumb.



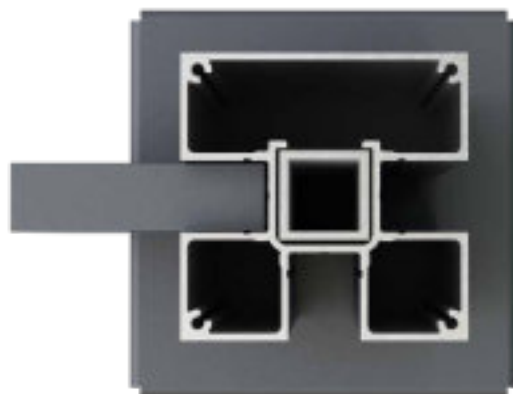
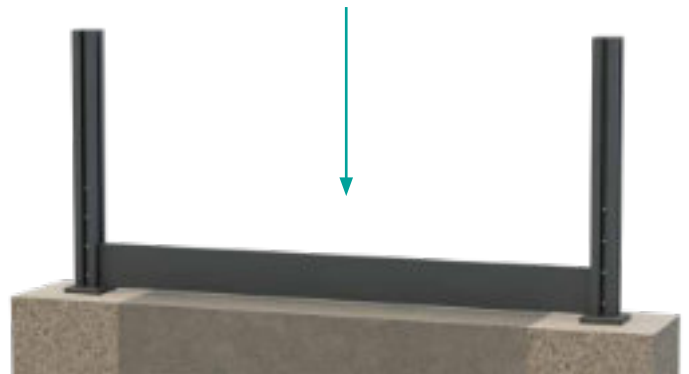
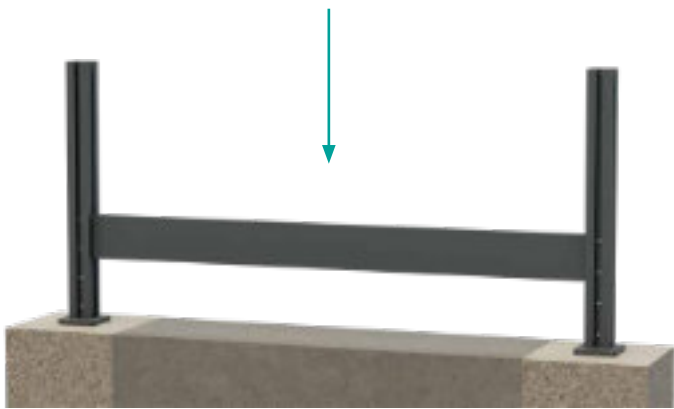
Then using a 4mm drill bit and a cordless drill, drill a pilot hole through the drill line in the front centre of the post for the self-drilling screws 50mm above the base plate and then at 100mm centres going up the post. Ensure you have a minimum of 4 fixings per post and the screws are in the centre of the channel.



50mm / 100mm / 150mm Slat Installation

STEP 1: Install fence slats

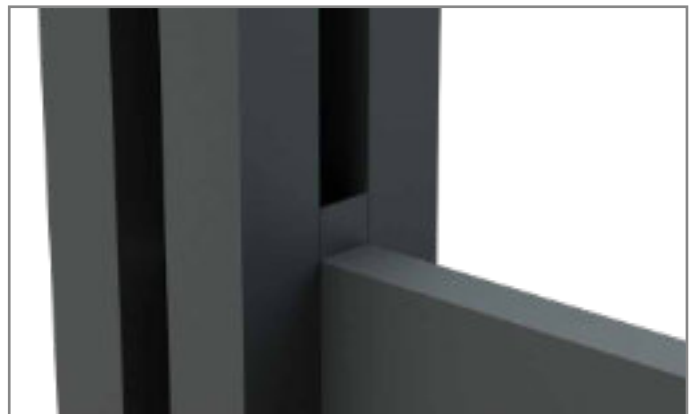
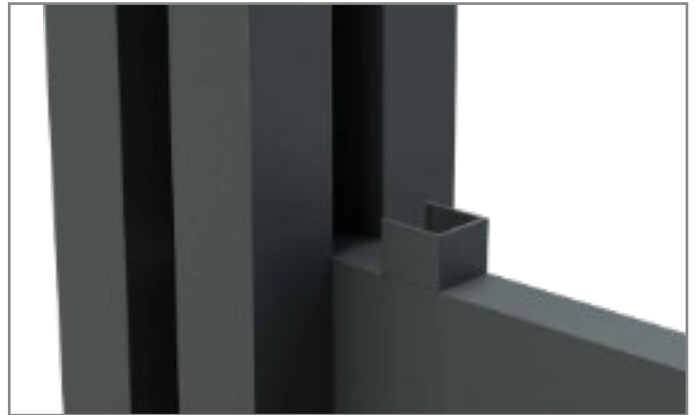
Now install your first fence slat by sliding the fence slat down from the top of the post all the way to the bottom.



50mm / 100mm / 150mm Slat Installation

STEP 2: Install slat spacers

It is time to install the spacers (if required), the spacers are cut to various sizes depending on the height of your fence, the slats may be installed without them if installing a privacy fence. Simply press the spacers into the post channel as shown below.



STEP 3: Install the stainless steel angle bracket

Now install the angle bracket on top of the last slat. Using your No. 2 pozidrive screwdriver bit, simply install the angle bracket using the self-drilling screws, there is no need to pilot drill these fixings.

Add your final piece of trim to cover the angle bracket.



50mm / 100mm / 150mm Slat Installation

STEP 5: install secondary trims and top caps

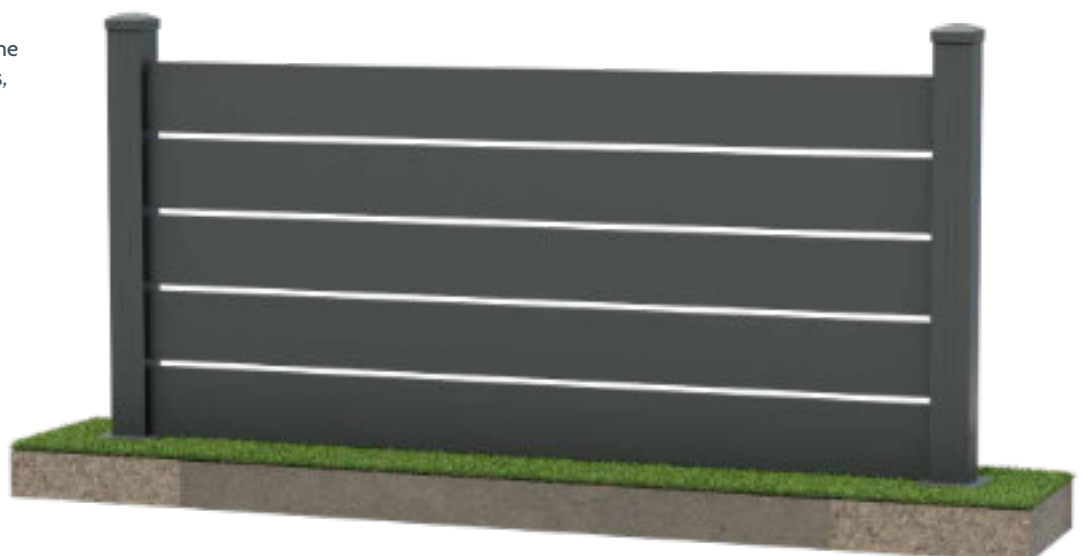
Install the secondary trims as required prior to installing the top cap.

Using the Sikaflex supplied apply a liberal amount of sealer around the inside of the top cap, then using your rubber mallet tap the top cap onto the top of the post, repeat this process to all top caps.



STEP 6: Clean

Using a solution of warm soapy water and a lint free cloth clean the fence and remove any fingerprints, dust or grime.

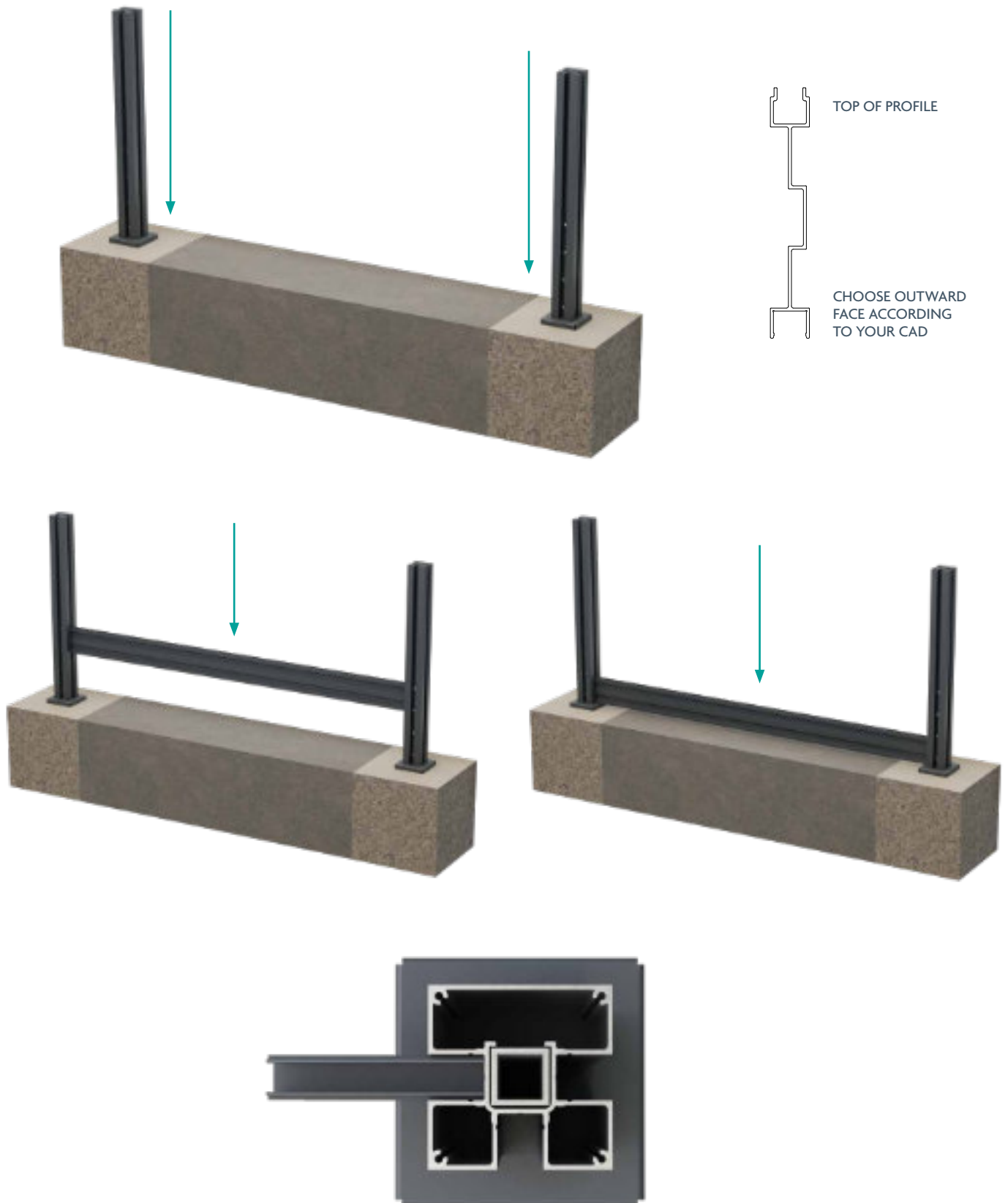


120mm Interlocking Slat Installation

STEP 1: Install 1st Slat

Now install your first fence Slat by sliding the fence Slat down from the top of the Post all the way to the bottom.

NOTE: Ensure the Slat is in the correct orientation before installing. The indented end should be orientated to point upwards. Refer to illustration.



120mm Interlocking Slat Installation

Step 2: Install 2nd Slat

Slide in the next Slat so it rests on top of the previous one. Ensure the Slat is correctly orientated.

Once sure, use your rubber mallet to firmly tap the Slat so that both Slats are clipped together. Work along the length of the Slat to ensure proper mating.

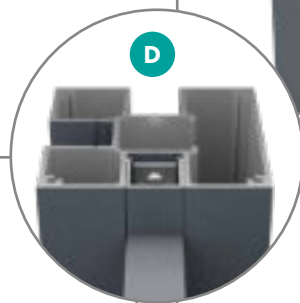
Repeat process for all remaining Slats.



Step 3: Securing the Panels

Lay the Post Trim Finisher on the top of the final Slat, and as before use your rubber mallet to firmly tap the Post Trim Finisher onto the Slat, working the length to ensure proper mating.

Now install the L-Angle bracket on top of the Post Trim Finisher using self-drilling screws and secure it to the Post Trim Finisher and the Post. Finish by inserting a length of Post Trim Spacer to cover the fixing.



Gate Installation

Step 1: 50 / 100 / 150mm Slat Install

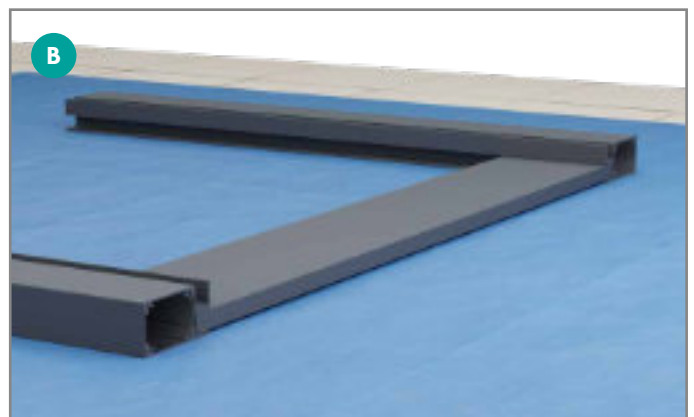
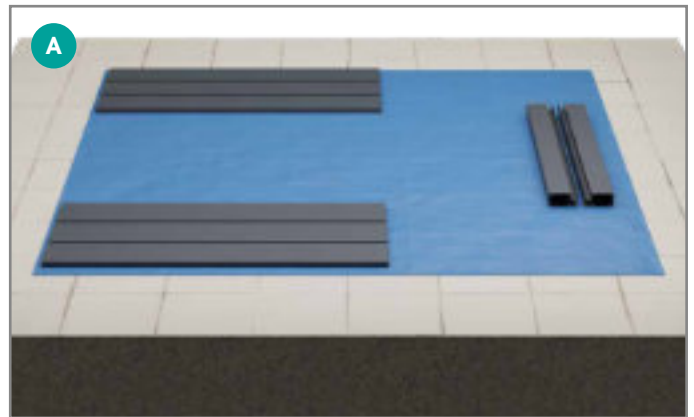
Start by preparing a protected, level surface to assemble the Gate Door without damaging the powdercoat finish.

Insert both Gate Posts onto the first Slat, ensure that the Slat is sitting level with the bottom of the Gate Post for the later installation of the Endplates.

NOTE: It is recommended to use Sash Clamps or similar to secure the frame and ensure a proper fit when installing the Slats. Do not overtighten the assembly as this will prevent the Slats from being installed.

Depending on your design, you may need to insert Post Trim Spacers between the Slats. Do this before installing the next Slat.

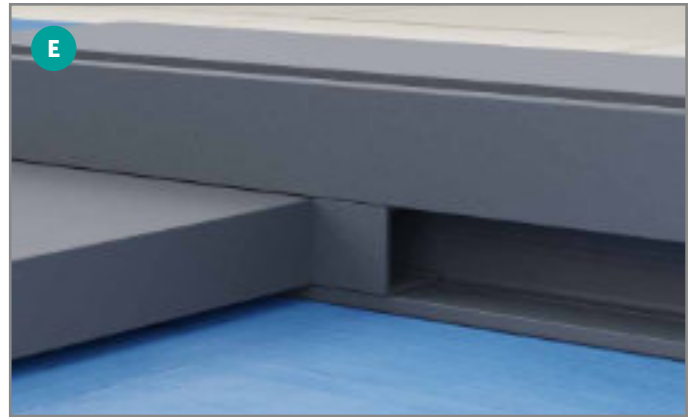
Secure the first Slat to the Gate Post profiles using 2x self-drillers on either side central in the fixings channel. Use a Roofing Square to ensure the frame is straight.



Gate Installation

Step 2: 50 / 100 / 150mm Slat Install CONTD.

Repeat installation of the remaining Slats by sliding them into the assembled frame and securing them as before, remembering to use the Post Clip spacers to ensure a fitted finish.



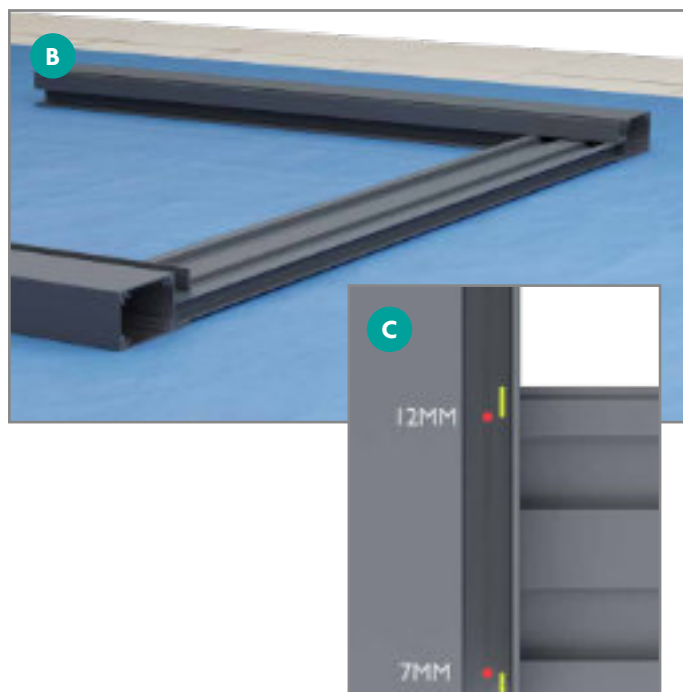
Gate Installation

Step 3: 120mm Interlocking Slat Install

Start by ensuring you have prepared a protected, level surface to assemble the Gate Door without damaging the powdercoat finish.

Insert both Gate Posts onto the first Slat, ensure that the Slat is sitting level with the bottom of the Gate Post for the later installation of the Endplates.

Ensure that your Slat is facing the intended direction for your design & is in the correct orientation, with the smaller indented clip facing upwards. Refer to illustration.

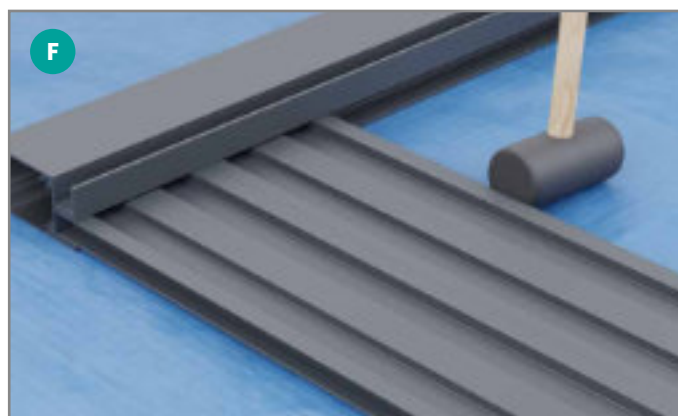
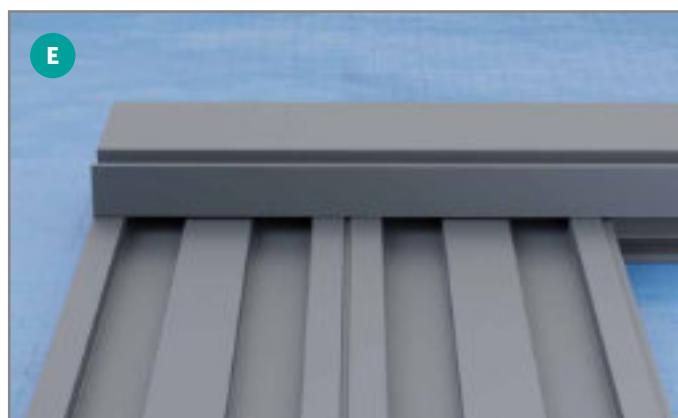


Secure the 1st Slat with a self-drilling screw with the following dimensions on either side:

- 12mm from the top edge of the Slat profile
- 7mm from the bottom edge of the Slat profile

Use a roofing square to ensure that the assembly is straight.

NOTE: It is recommended to use Sash Clamps or similar to secure the frame and ensure a proper fit when installing the Slats. Do not overtighten the assembly as this will prevent the Slats from being installed.



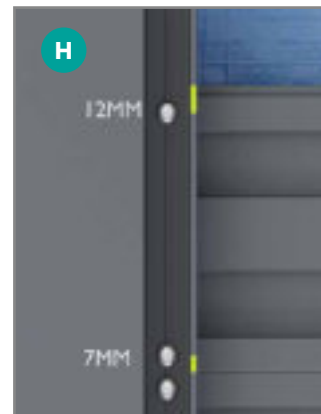
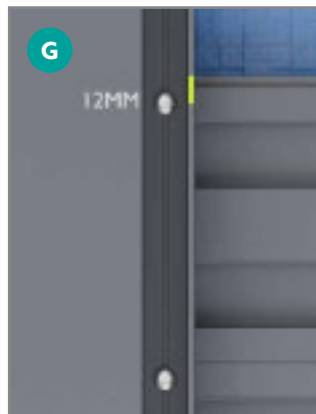
Gate Installation

Step 3: 120mm Interlocking Slat Install contd.

Insert the 2nd Slat so that it rests on top the 1st. With the assembly rested upright on your protected level surface, use your rubber mallet to firmly tap the two Slats together, working along their length to ensure proper mating.

Secure the 2nd Slat with a self-drilling screw 12mm from the top edge of the profile on either side. Refer to illustration.

Recheck that the assembly is straight with a Roofing Square.



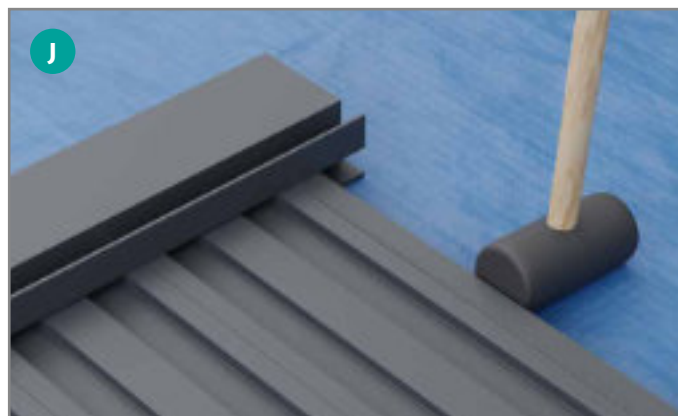
Repeat installation of the remaining Slats securing with a self-drilling screw 12mm from the top edge of the profile on either side, ensuring that the assembly is on a protected level surface whilst doing so.

Secure the last Slat with a self-drilling screw with the following dimensions on either side:

- 12mm from the top edge of the Slat profile
- 7mm from the bottom edge of the Slat profile

Next, insert the long Post Trim Finisher into the Gate Post and rest on top of the final Slat. Use your rubber mallet to firmly tap the Post Trim Finisher onto the Slat, working the length to ensure proper mating.

Insert the short Post Trim Spacers into the Gate Post above to finish the Slat assembly.



Gate Installation

Step 4: Attach Trim

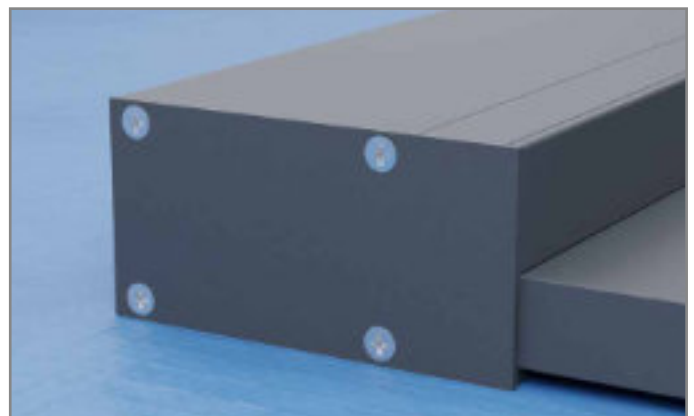
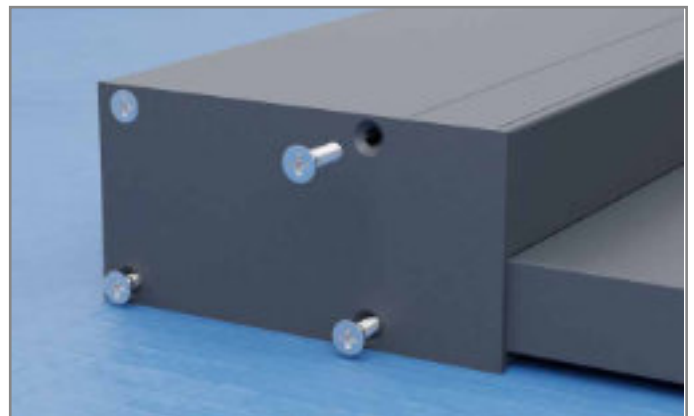
Ensure that your Post Trim Finisher is the correct size to fit in the Gate Post. Use your rubber mallet to firmly tap in one end of the Post Trim Finisher into the Fixings channel of the Gate Post and work the length, ensuring that the Post Trim Finisher is fully inserted and flush with the surface of the Gate Post.



Step 5: Install End plates

Install the Endplates to both ends of the Gate Post profiles with self-drilling screws. Ensure that they sit flush against the Gate Post.

DO NOT overtighten the Endplates as this could cause the plates to warp if seated improperly.



Gate Installation

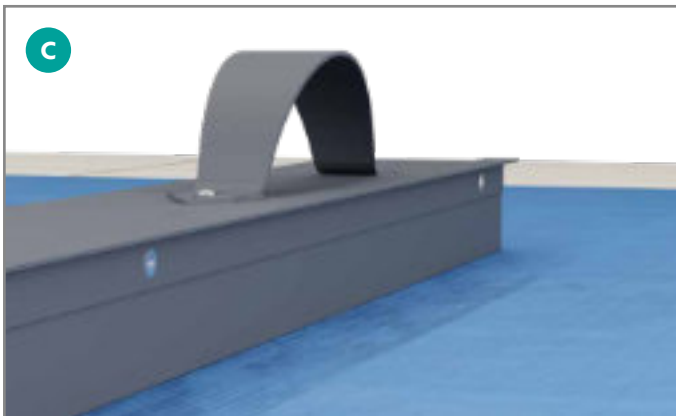
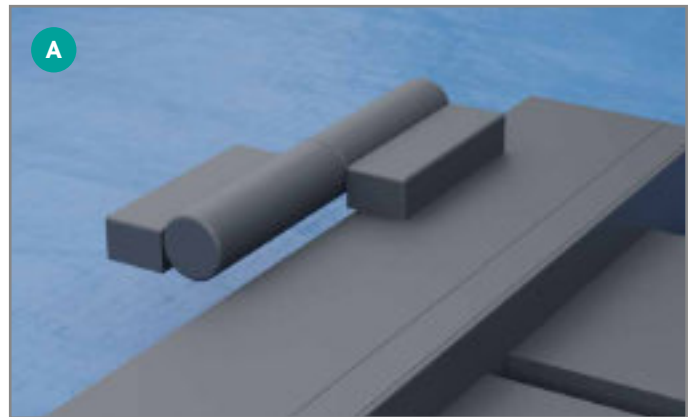
Step 6: Attach fixtures

Now is the time to attach fixtures to the Gate Door. Refer to your fixture instructions to properly hang the Gate Door & attach handles, locks etc.

When installing the Gate Door, ensure that the Fence Post is orientated so that the hinge is always installed to the flat side of the Post.

Attach the Gate T Section Stopper profile to the same side as the handle, ensuring that the profile sits flush with the length of the gate.

Secure to the Gate using suitable fixings in the inside corner of the Gate T Section Stopper profile.



Step 7: Clean

Using a mild solution of warm soapy water and a lint free cloth clean the Gate Door and remove any fingerprints, dust or grime.





A-Fence by AliDeck

Europa & Jenner House, Victory Park, 1-2 Trident Close,
Medway City Estate, Rochester, ME2 4ER

01622 235 672 | info@alideck.co.uk

www.alideck.co.uk